

Supplies: 19 ½" x 42" rectangle of fabric,
 two 1" x 8" rectangles of fusible interfacing, two 7/8" buttons, 14" pillow form, thread
 ½" seam allowances unless otherwise mentioned

Pillow Facings

1. On wrong side, draw a line 2" from each short edge, with fabric pen and ruler. With edge of interfacing against and inside the line, center strip with glue side down. Press with cloth.

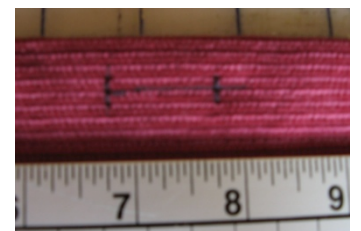


2. On right side, draw a line 2" from each short edge, with fabric pen and ruler. Press toward wrong side. Fold raw edge inside hem. Press. Pin. Edge stitch. Press.



Buttonholes

3. With a ruler, make lines within the interfaced hem from 6 ¾" to 7 ¾" and 11 ¾" to 12 ¾".



4. Make buttonholes within marked lines. Cut buttonholes open with a stitch ripper, protecting bartacks with pin.

Pillow Assembly

5. With fabric pen make marks on long unfinished edges 9 ¾" from either side. Starting with buttonholed side, fold at marks, bringing right sides together. Fold second side, overlapping plain hem over the buttonholed one. Pin edges. Stitch.



6. Clip corners and grade facing seams.

7. Turn right side out and push out corners, gently! Line up facings and pin. Press all four sides. Working on pillow front, draw a square 2 ¼" inside pillow edges, with fabric pen and ruler. Pin, pin, pin. Sew seam, pivoting in the corners. Press.



Buttons

8. Sew buttons to facing, under buttonholes. Enjoy your new pillow!

